
Selce-T

Studiopepe
2024



Table made by applying natural stone powder through a manual spatula technique.
Available in “bruciato”, “crema”, “conchiglia” and “grafite” colors.

XL version available with two tops side by side.

Joint between the tops in metal painted in the same colour as the top.

Upon request, the table can be custom-made.

For customized versions, the base dimensions are standard, while the quantity and type of bases will be determined at the time of order.

Since it is a mixture of pulverized natural stones, uniformity in the color shades is not guaranteed.

Dimensioni / size

Cm (Ø x H)

130 x 75

150 x 75

180 x 75

Cm (L x P x H)

220 x 120 x 75

240 x 120 x 75

280 x 130 x 75

300 x 130 x 75

360 x 130 x 75

430 x 130 x 75

500 x 130 x 75

Dimensioni / size

Inches (Ø x H)

51 $\frac{1}{4}$ x 29 $\frac{3}{4}$

59 $\frac{1}{4}$ x 29 $\frac{3}{4}$

71 x 29 $\frac{3}{4}$

Inches (L x P x H)

86 $\frac{3}{4}$ x 47 $\frac{1}{4}$ x 29 $\frac{3}{4}$

94 $\frac{1}{2}$ x 47 $\frac{1}{4}$ x 29 $\frac{3}{4}$

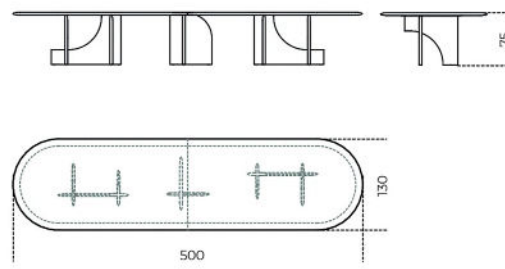
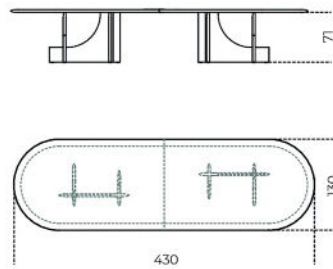
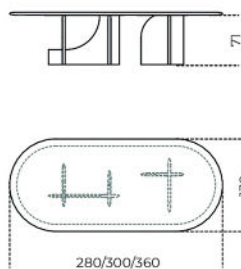
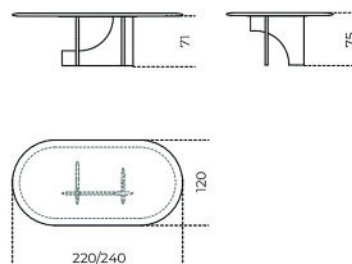
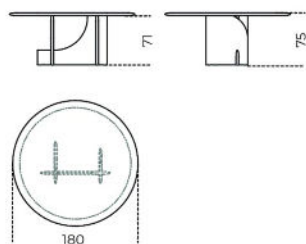
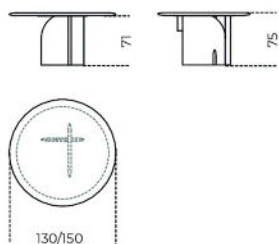
110 $\frac{3}{4}$ x 51 $\frac{1}{4}$ x 29 $\frac{3}{4}$

118 $\frac{3}{4}$ x 51 $\frac{1}{4}$ x 29 $\frac{3}{4}$

141 $\frac{3}{4}$ x 51 $\frac{1}{4}$ x 29 $\frac{3}{4}$

169 $\frac{1}{2}$ x 51 $\frac{1}{4}$ x 29 $\frac{3}{4}$

197 x 51 $\frac{1}{4}$ x 29 $\frac{3}{4}$



Finishes

Natural stone powder



"Bruciato"



"Conchiglia"



"Crema"



"Grafite"